

Manchester City Council Our Children Sufficiency Strategy 2022 – 27 Developments

‘A child who is looked after by the Council or a care leaver has the right to expect everything from a corporate parent that would be expected from a responsible and good parent’.

There will be continued engagement with Our Children, families, our teams, providers and our partner agencies throughout the life of this Strategy to ensure its continued relevance to meet the required outcomes.

The Right Carergiver

To secure quality carers and support that meet the needs of Our Children

The Right Place

We want to ensure that all children wherever possible are able to remain in Manchester, to have quality care and accommodation and support which is value for money.

The Right Time

Well planned moves, that reduce unplanned endings and unplanned moves

Partnership and choice

Successful long term care givers can only be achieved by working in partnership and sharing risk

Our Manchester Behaviours

We will demonstrate Our Behaviours in everything we do.

Strategic Direction



Commissioning Storyboard March 2023

Service Position	Vision	How we achieve our vision?	Key Developments and workstreams	Outcomes, impact and achievements 2020-21	Next Steps
<p style="writing-mode: vertical-rl; transform: rotate(180deg); font-size: 2em; font-weight: bold;">Commissioning</p>	<p>Increased placement stability</p>	<p>Build relationships with internal and external providers through development of Hubs</p>	<p>Joint Commissioning Group– provides planning and shared ownership of commissioning activity and risk.</p>	<p>Manchester numbers of Looked After Children have reduced to 1385 of which 63% have been looked after for over 18 months. Overall placement spend is at 2010 levels</p>	<p>Continue to develop accommodation models for care leavers and those developing pathways to independence</p>
	<p>Early intervention flexed around the individual</p>	<p>Develop panels / clinics which support innovation and partner oversight</p>	<p>Post 16 Hub and residential provider hubs working alongside placement oversight clinics – delivering planned long term accommodation and stability.</p>	<p>Decommissioning and re-commissioning services to ensure quality and maximised delivery.</p>	<p>Joint commissioning of transition accommodation</p>
	<p>Commissioning by outcomes</p>	<p>Develop practice models across early help and social care</p>	<p>GM House Project Collaborative and Staying Close funding achieved.</p>	<p>Increased number of post 16 years living in Manchester and within supported lodgings. 24 Young people receiving tenancies through House Project, with most pre 18 years.</p>	<p>Develop shared care and short breaks provision to enable families to remain together longer. Implement Respite Innovation Fund</p>
	<p>Increased partnership approaches and coproduction with service users and carers as the norm</p>	<p>Increase commissioning capacity and skills</p>	<p>Capital funding successfully bid form DFE and Capital board to support innovations</p>	<p>Increased offers of joint funded support to wrap around commissioned services, strengthened joint commissioning oversight and processes.</p>	<p>Take a breath accommodation models joint funded innovative step-down models from hospital and care. and health initiatives implemented.</p>
	<p>Increased choice, quality and value for money</p>	<p>Plan with partners to ensure time to collaborate and co-produce; ensuring shared ownership of risk, finance and quality</p>	<p>Enabling Independence Accommodation Strategy co-produced with housing providers, partners and across directorates.</p>	<p>Accommodation models continue to be developed with ethical partners.</p>	<p>Short breaks and improved over night offer for children with disabilities and their families</p>
	<p>Ethical marketplace and authority of choice for providers</p>	<p>Horizon scan to ensure make best use of opportunities</p>	<p>Social value and ethical procurement embedded across practice. Increasing offers to Manchester and creating value for money.</p>	<p>Care Consultants recruited to support young peoples voice within commissioning and decision making</p>	<p>Implementation of Mockingbird and Safeguarding models</p>
				<p>No children in emergency/B&B accommodation since 2017.</p>	<p>Implementation of the Independent Review of Childrens Social Care recommendations, regional contract and sufficiency</p>
			<p>More children placed in GM/Manchester to maintain relationships/connections greater stability in a safe, secure and loving home</p>	<p>Transparent and improved financial oversight and payment systems</p>	
			<p>Only 7% of our children living in a residential setting.</p>	<p>Registration of post 16 accommodation models</p>	



Develop bespoke accommodation

Take a Breath models

Wythenshawe Rd

Implement Olanyian

Implement Mockingbird

Develop transition accommodation

Project teams developed

Capital and revenue finances agreed



Develop our local sufficiency

All Sector Quarterly local provider forums

Bespoke Fortnightly referral hubs Residential / Fostering

Maximise Post 16 and UASC offer

Develop ethical providers

Increased integration into forum, clinics and referral hubs

Market vision shared and implemented



Manage our local provision

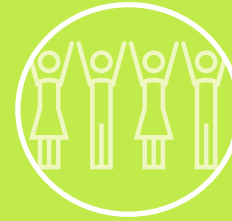
Unregulated Accommodation is monitored and actively managed

Manage new growth in partnership with Ofsted

Develop procured/contracted models to manage sufficiency

Revise SNMG ToR communication and governance

Revision of local contracts and offer



Develop practice and partnerships

Dynamic support register implemented / confidently used across agencies

Implement crisis care models

Maximise House Project and Staying Close with our Housing Partners

Robust accountability and governance for Joint Commissioning Group and Projects



Develop edge of care and early help services for children with disabilities

Utilising co-production develop and refresh:

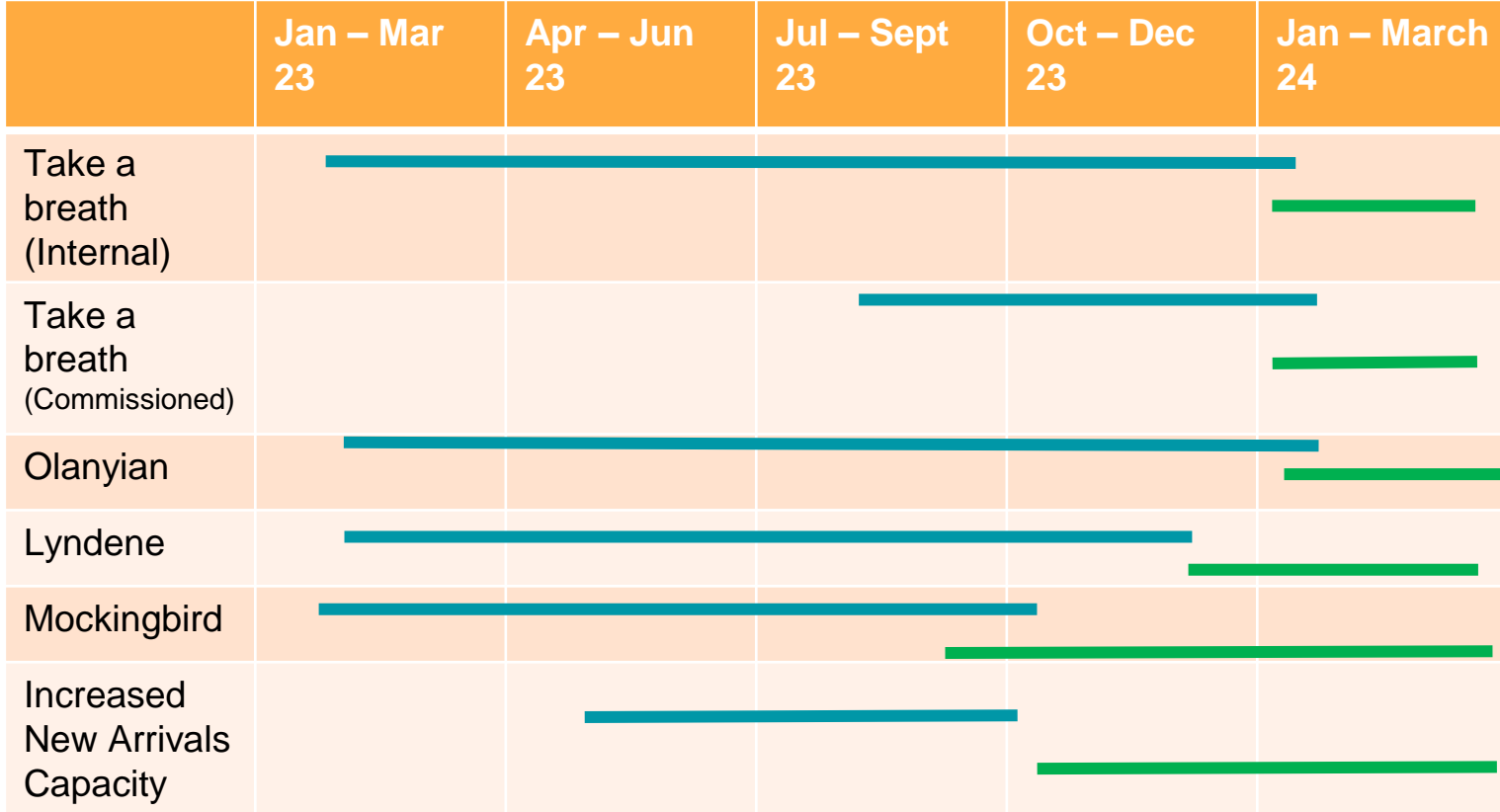
- ✓ Lyndene
- ✓ Shared care services
- ✓ Childminder and extended school offer
- ✓ Short breaks provider model

Financial modelling

Revised service specification

Provider engagement

Implementation Timeline



Implementation 

Delivery 

Take a Breath

Internal Service Delivery

- Registered Manager in post
- Recruitment of posts ongoing
- Preparation for Ofsted submission

Commissioned Service Delivery

- Tender completed
- Provider appointed

Property

Scheduled of works to commenced in November
completion dates March

Integrated Delivery

MFT business case approved for MH and OT practitioners

Operation Delivery

- Codesign
- Training program
 - SOP
 - Delivery Plan

Staff

Recruitment
Induction
Training

Service Delivery Enablers

Work with Strategic Partner

Lyndene -

- Ofsted Registration Submitted
- Staff induction training commenced
- Home lease hand over October
- Operational November

Olyanian

- Operational delays linked to the recruitment of a Registered Manager
- RM appointed will be in post Jan 24
- Ofsted Registration Process to commence Oct
- Staff onboarding / training commenced
- Operational February 23